

RIBEREÑA HIGHWAY (HIGHWAY 2), SOUTHEAST OF
 MAQUILPARK INDUSTRIAL PARK
 REYNOSA, TAMAULIPAS, MEXICO

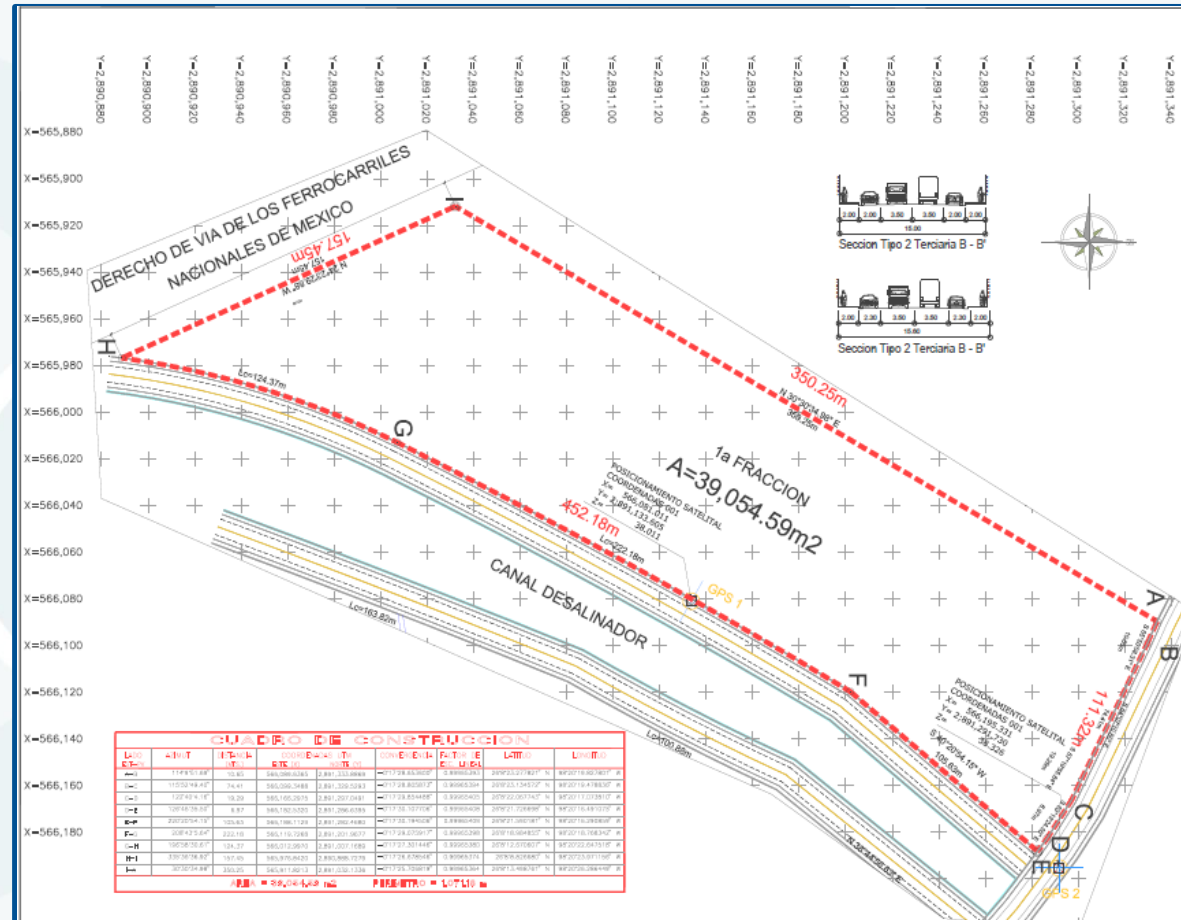


LAND FOR SALE

39,055 M2

SITE DESCRIPTION

- Location: **Ribereña Highway (Highway 2) S/N**
- Area: **39,055 Square Meters/3.90 Hectares/9.65 Acres**
- Frontage: **157.45 Meters - 516 Feet along Highway 2**
- Depth: **350 Meters - 1,148 Feet**
- Zoning: **Industrial**
- Access:
 - Located adjacent to the Ferromex railroad and less than 2 miles from the Anzaldúas International Bridge.



The information contained herein has been obtained through sources deemed reliable, but cannot be guaranteed for its accuracy. We recommend to any potential buyer or third party that any information, which is of special interest, including but not limited to measurements, areas and boundaries, should be obtained through independent verification.

COMMERCIAL BORDER PARTNERS
 Blvd. Campos Elíseos No. 9050, Suite 3F
 Fracc. Campos Elíseos
 Cd. Juárez, Chihuahua, 32470
 (656) 625-0503; 625-04-84
www.commercialbp.com



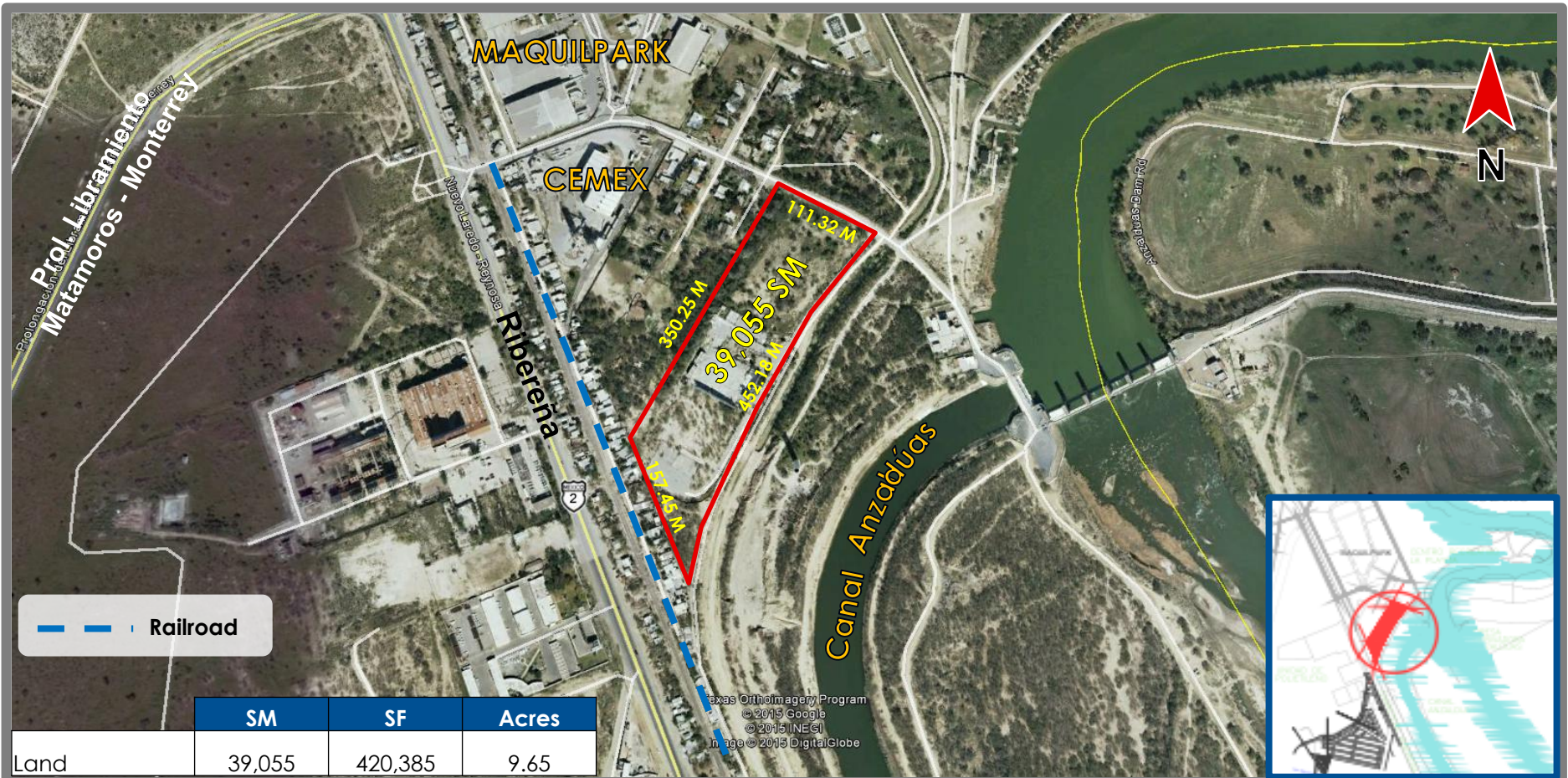
The depiction in the included photograph of any person, entity, sign, logo or property, other than Commercial Border Partners (CBP) or its client and the property offered by CBP, is incidental only, and is not intended to connote any affiliation, connection, association, sponsorship or approval by or between that which is incidentally depicted and CBP or its client. This listing shall not be deemed an offer to lease, sublease or sell such property; and, in the event of any transaction for such property, no commission shall be earned by or payable to any cooperating broker except if otherwise provided pursuant to the express terms, rates and conditions of CBP's agreement with its principal, if, as and when such commission (if any) is actually received from such principal. (A copy of the rates and conditions referred to above with respect to this property is available upon request.)

RIBEREÑA HIGHWAY (HIGHWAY 2), SOUTHEAST OF
 MAQUILPARK INDUSTRIAL PARK
 REYNOSA, TAMAULIPAS, MEXICO



LAND FOR SALE

39,055 M2



The information contained herein has been obtained through sources deemed reliable, but cannot be guaranteed for its accuracy. We recommend to any potential buyer or third party that any information, which is of special interest, including but not limited to measurements, areas and boundaries, should be obtained through independent verification.

For more information, please contact:

Adrian Slater, CCIM
 México Tel: 011-52 (656) 625-0503
 US. Tel: (915) 740-7140
 aslater@commercialbp.com

Jorge Bermúdez, CCIM
 México Tel: 011-52 (656) 625-0503
 Mobile: (656) 130-8013
 jbermudez@commercialbp.com



The depiction in the included photograph of any person, entity, sign, logo or property, other than Commercial Border Partners (CBP) or its client and the property offered by CBP, is incidental only, and is not intended to connote any affiliation, connection, association, sponsorship or approval by or between that which is incidentally depicted and CBP or its client. This listing shall not be deemed an offer to lease, sublease or sell such property; and, in the event of any transaction for such property, no commission shall be earned by or payable to any cooperating broker except if otherwise provided pursuant to the express terms, rates and conditions of CBP's agreement with its principal, if, as and when such commission (if any) is actually received from such principal. (A copy of the rates and conditions referred to above with respect to this property is available upon request.)