



COMMERCIAL  
BORDER PARTNERS

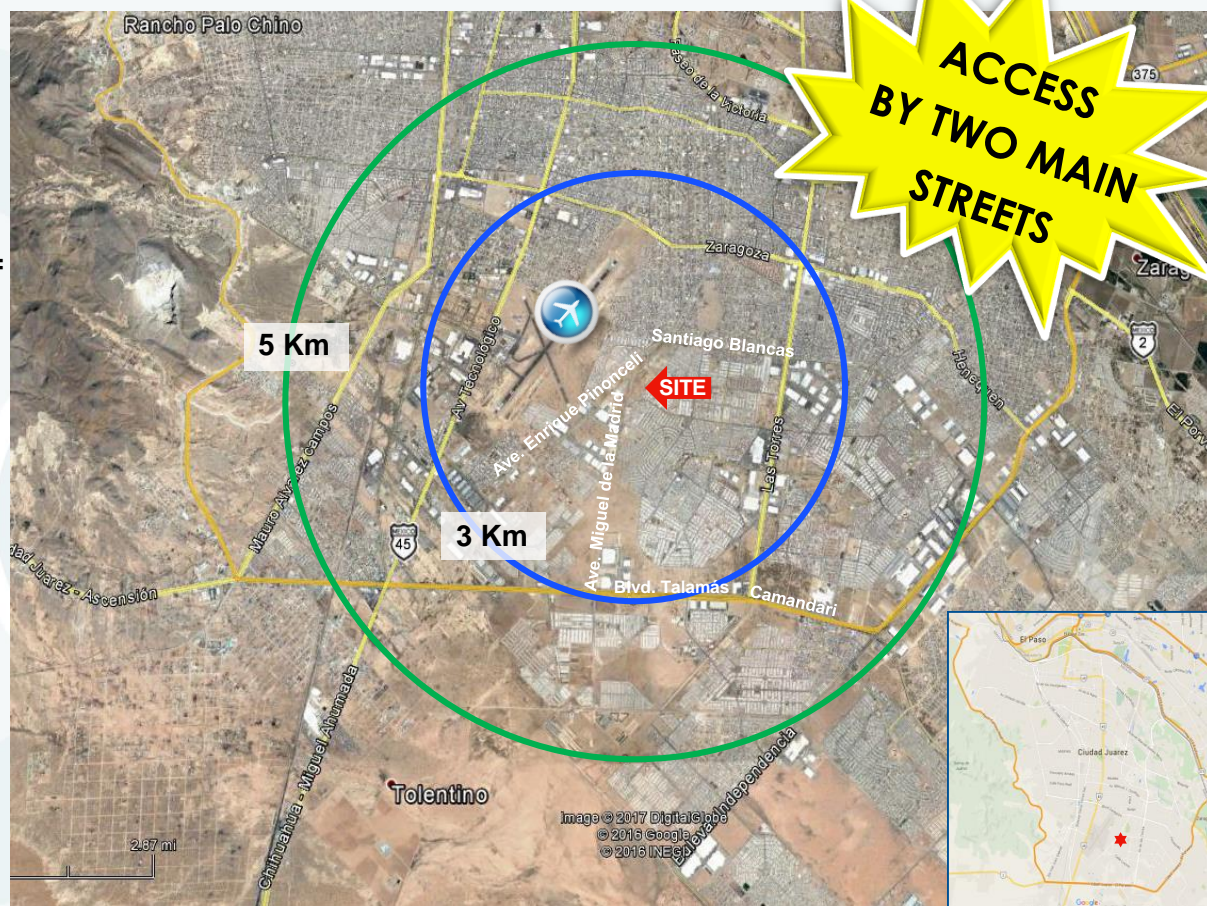
NORTH EAST CORNER OF AVE. ENRIQUE  
PINONCELI AND AVE. MIGUEL DE LA MADRID  
CD. JUAREZ, CHIHUAHUA, MEXICO

# LAND FOR SALE

## 14.3 Hectares

### SITE DESCRIPTION

- Location:** Northeast Corner of Ave. Enrique Pinonceli and Miguel de la Madrid
- Area:** 142,782 Square Meters/14.3 Hectares/1,536,893 SF
- Zoning:** Site to Allow Commercial, Residential and Light Industry Developments
- Access:** Excellent access by two Main Streets:
- West, along Ave. Enrique Pinonceli
  - South, along Ave. Miguel de la Madrid
- Demographics**
- 3 Km Radius:**
- Population: 158,525
  - Homes: 43,041
- 5 Km Radius:**
- Population: 404,205
  - Homes: 110,329



COMMERCIAL  
BORDER PARTNERS

### COMMERCIAL BORDER PARTNERS

Bldv. Campos Elíseos No. 9050, Suite 3F  
Fracc. Campos Elíseos  
Cd. Juárez, Chihuahua, 32470  
(656) 625-0503  
[www.commercialbp.com](http://www.commercialbp.com)

The depiction in the included photograph of any person, entity, sign, logo or property, other than Commercial Border Partners (CBP) client and the property offered by CBP, is incidental only, and is not intended to connote any affiliation, connection, association, sponsorship or approval by or between that which is incidentally depicted and CBP or its client. This listing shall not be deemed an offer to lease, sublease or sell such property; and, in the event of any transaction for such property, no commission shall be earned by or payable to any cooperating broker except if otherwise provided pursuant to the express terms, rates and conditions of CBP's agreement with its principal, if, as and when such commission (if any) is actually received from such principal. (A copy of the rates and conditions referred to above with respect to this property is available upon request.)





COMMERCIAL  
BORDER PARTNERS

NORTH EAST CORNER OF AVE. ENRIQUE  
PINONCELI AND AVE. MIGUEL DE LA MADRID  
CD.JUAREZ, CHIHUAHUA, MEXICO

# LAND FOR SALE

14.3 Hectares



Lot "D"	5,182 M2
Lot "C"	52,606 M2
Lot "B"	84,994 M2



COMMERCIAL  
BORDER PARTNERS

For more information, please contact:

**Adrian Slater, CCIM**

México Tel: 011-52 (656) 625-0503

US. Tel: (915) 740-7140

aslater@commercialbp.com

**Jorge Bermúdez, CCIM**

México Tel: 011-52 (656) 625-0503

Mobile: (656) 130-8013

jbermudez@commercialbp.com

The depiction in the included photograph of any person, entity, sign, logo or property, other than Commercial Border Partners (CBP) client and the property offered by CBP, is incidental only, and is not intended to connote any affiliation, connection, association, sponsorship or approval by or between that which is incidentally depicted and CBP or its client. This listing shall not be deemed an offer to lease, sublease or sell such property; and, in the event of any transaction for such property, no commission shall be earned by or payable to any cooperating broker except if otherwise provided pursuant to the express terms, rates and conditions of CBP's agreement with its principal, if, as and when such commission (if any) is actually received from such principal. (A copy of the rates and conditions referred to above with respect to this property is available upon request.)